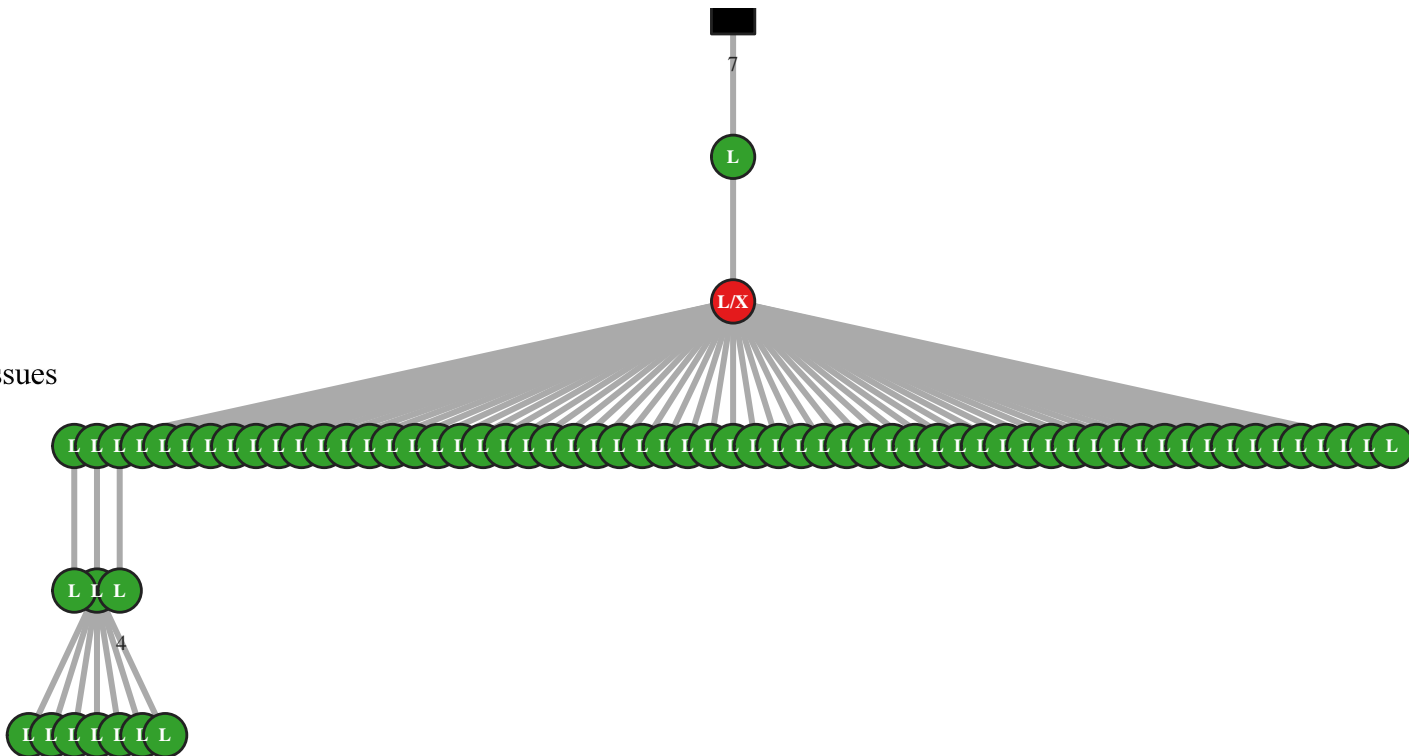
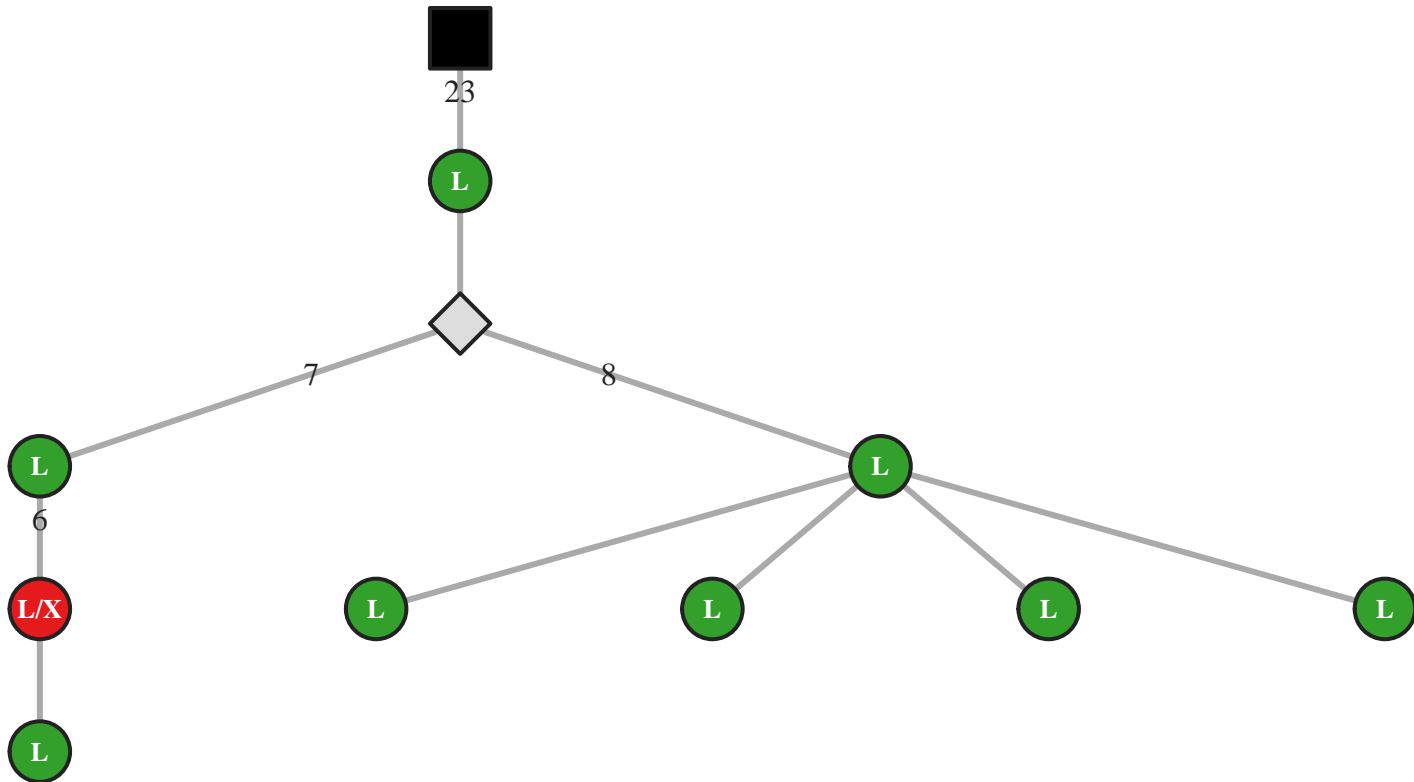


M4 IgG IGHV1-2/J4 51bp (23424)

- Germline
- ◇ Inferred
- Ⓒ Choroid plexus
- ⒫ Pia mater
- ⒲ Cortex
- ⒳ Lesion
- ⒴ CLN
- Ⓐ Spleen
- Ⓓ Multiple CNS tissues
- Peripheral and CNS tissues



M4 IgG IGHV3-15/J4 39bp (17871)



M4 IgG IGHV4-39/J4 63bp (4014)

